

**MPTF supports our  
entertainment community  
in living and aging well,  
with dignity and purpose,  
and in helping each  
other in times of need.**

**MPTF | IOO**  
*Caring is Infinite*



# Table of Contents

**MPTF supports our entertainment community in living and aging well, with dignity and purpose, and in helping each other in times of need.**



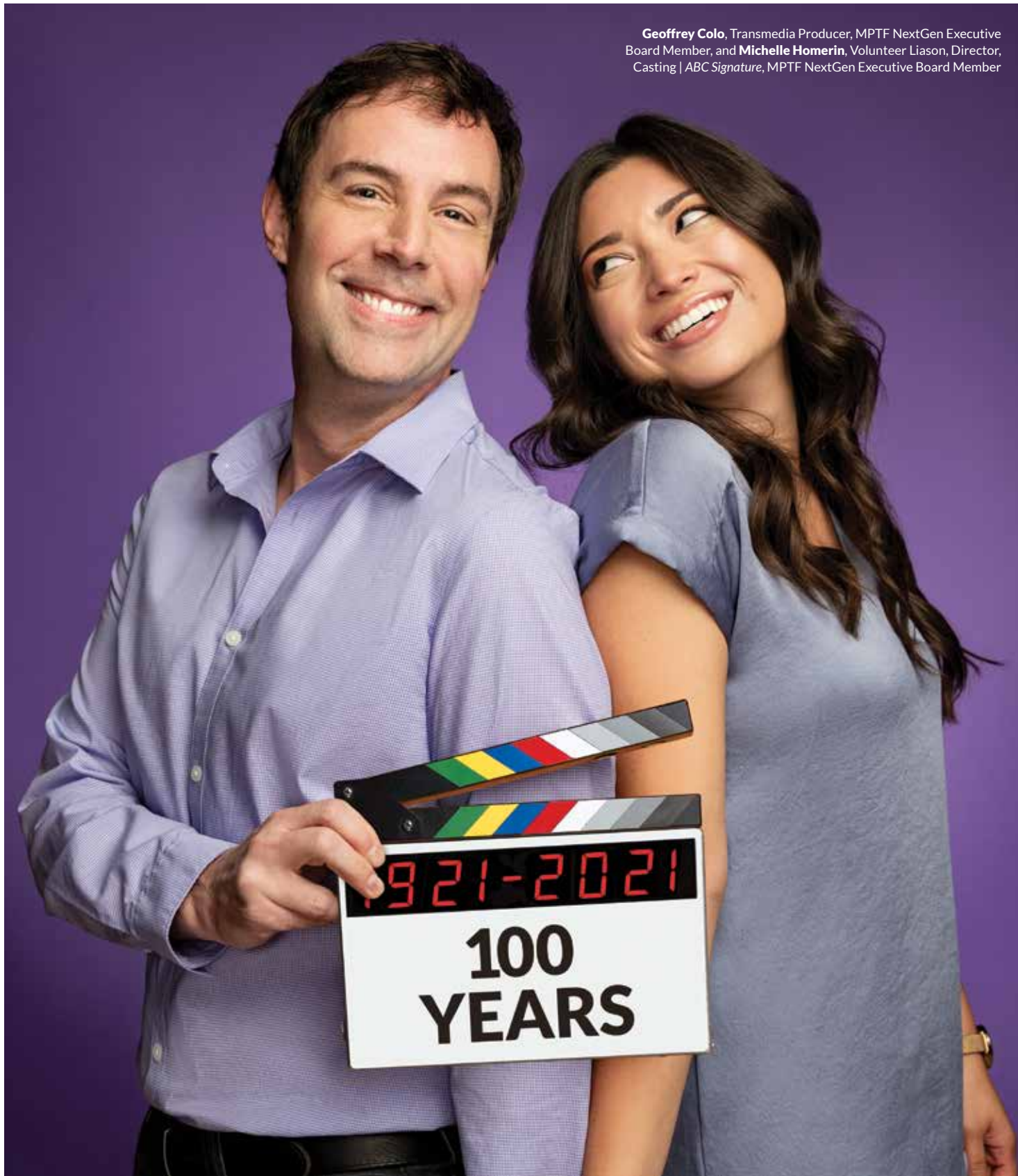
Click on the topics below to navigate to that page. Once on the selected page, click on the MPTF logo to return to this table of contents.

Ways to Participate .....	3
Our 100th Campaign .....	4
Our Services .....	5
Behavioral Health .....	6
Child Care .....	7
Elder Connection .....	8
Health Insurance .....	9
Palliative Care .....	10
Social Connectivity .....	11
Spiritual Health .....	12
Veterans Assistance .....	13
MPTF Studios .....	14
NextGen .....	15
Volunteering .....	16





Geoffrey Colo, Transmedia Producer, MPTF NextGen Executive Board Member, and Michelle Homerin, Volunteer Liason, Director, Casting | ABC Signature, MPTF NextGen Executive Board Member



## Ways to Participate

For 100 years, MPTF (Motion Picture and Television Fund) has helped people in the entertainment community navigate difficult times with compassion and care. There's never been a more important time to get involved.



## WAYS TO GIVE

[MPTF.com/ways-to-give](https://www.mptf.com/ways-to-give)

# Help us achieve 100% participation.

### WHY DOES IT MATTER?

MPTF provides a safety net of social services to people in the entertainment industry, including charitable financial assistance, case management to navigate difficult times, and residential living on its sprawling campus. From childcare through the entire spectrum of life, we take care of our own.

### WHAT CAN YOU DO?

We're a tight-knit group, working in an industry like no other, and together we are strong. But it takes a village to make this thing we do a success. From the big studios to grassroots levels, we need you.

Please support MPTF financially, volunteer your time, encourage others to play their part, and help us stay active and healthy into the future. We're asking you to play your part with 100% participation for the future of MPTF.

### DONATE

Your donation allows us to continue to fund the support we provide for the entertainment

community. Donate at a level that's meaningful for you and join us in taking care of our own.

### VOLUNTEER

Your time and participation are critical for keeping all parts of our entertainment community healthy and vibrant. Regardless of the amount of time you have to give, we will find a great use for your participation. We offer over 100 ways to volunteer and for you to play your part. From calling on individuals who are socially isolated to delivering groceries to those who are food insecure, we specialize in good karma points of all kinds.

### BE AN AMBASSADOR

Your advocacy for MPTF helps us spread the word and the heartfelt stories of our recipients of care. By signing up as an ambassador, you periodically receive a packet with social media posts, images, and engagement tools designed to help you easily rally your contacts for the cause.

### 100% PARTICIPATION

Please join us as we raise funds and excitement around this important cause. Let's sustain MPTF as a vital safety net we can count on for the next 100 years.

"We see a need, and we fill it."

— MARY PICKFORD

Visit [mptf.com](https://www.mptf.com) to make a donation or sign up to volunteer, and email [info@mptf.com](mailto:info@mptf.com) to become an ambassador and gain access to social media posts and tools you can use to help spread the word.





Tom Bergeron, Actor, and Flora Huang, Treasurer, Senior Vice President, International Finance & Strategy, AMC Networks, MPTF NextGen Executive Board Member



## We all play our part.

### HOW TO PLAY YOUR PART

For over 100 years, donors like you have kept MPTF in a supporting role—providing vital charitable services and programs to the entertainment industry community and carrying on the legacy of taking care of our own.

Our safety net of services is a lifeline to countless individuals in crisis and offers help for veterans, palliative care, child care and so much more. Our retirement facility in Woodland Hills is a place to call home for senior industry members and allows them to age in place with dignity and purpose.

Your donation allows us to continue this valuable support. Please donate at a level that's meaningful for you and join us in taking care of our own.

### HOW TO GIVE

- **MPTF 100<sup>th</sup> Campaign** The second part of the 100<sup>th</sup> Campaign is focused on creating a financial reserve to sustain MPTF's campus and community programs for the foreseeable future. This is a must do as the need for our services grows in our community and the costs of providing services escalate.
- **Annual Fund** The backbone of our organization, these funds cover essential operational costs and are applied to the greatest need. Options include tribute gifts, Payroll Pledge through your employer, gifts of stock, grants from Donor Advised Funds (DAF), vehicle donations, and giving through the Amazon Smile Foundation.
- **MPTF Giving Day** Your annual opportunity to show your support for MPTF and spread the word about our services and resources.
- **Planned Giving** Give through your estate in a variety of ways: make MPTF a beneficiary, include us in your will, or establish a charitable annuity to provide income to you and a gift to MPTF.
- **Donations** We are a 501(c)(3) charity, (Fed Tax ID 95-1652916). All contributions are tax-deductible under IRS code 170(b).

Jodie Foster and MPTF resident Harry Northup share stories at MPTF's 100th Year Celebration Event



## Our 100th Campaign

Donations are the lifeblood of our support for the entertainment community. We offer a wide range of ways to contribute meaningfully, at whatever level you are able.



Our Development and Planned Giving teams can help you discover the right way to pay it forward. Email us at [development@mptf.com](mailto:development@mptf.com) or call 818 876 1925.







Yvette Nicole Brown, Actor, and  
Toni Vaz, Actor, NAACP Image  
Awards Creator, MPTF Resident

## Our Services

### Child Care

310 445 8993

For industry members with children ages 8 weeks to 6 years, *The Samuel Goldwyn Foundation Children's Center* in West Los Angeles, operated by *Bright Horizons*, is open 7am to 7pm.

### Community Social Services

323 634 3888

MPTF provides temporary financial assistance, case management, information, and referrals to working-age industry members who are between jobs or are experiencing a period of disability.

### Elder Connection

323 634 3866

For industry members 65+ or younger industry members caring for aging parents, *Elder Connection* social workers provide needs assessment, case management, counseling, information, and referrals.

### Entertainment Health Insurance Solutions

833 777 3447

*EHIS* provides comprehensive health insurance counseling and enrollment support to California

residents of the entertainment community. For more information call or go to [ehisca.com](http://ehisca.com).

### Palliative Care

818 876 1739

Industry members (and family members) diagnosed with serious illness can rely on the support of MPTF's award-winning interdisciplinary team to help improve their overall quality of life.

### Residential

818 876 1552

The Wasserman Campus in Woodland Hills offers entertainment industry retirees a place to live in a vibrant independent and assisted living community.

### Skilled Nursing

323 634 3866

MPTF offers long-term and memory care in a Medicare 5-star rated home-like environment on its Wasserman Campus.

### The Samuel Goldwyn, Jr. Center for Behavioral Health

818 876 4140

Individuals 55+ seeking help in coping with mental health issues are eligible to receive care at

this newly renovated center with private patient rooms and an interdisciplinary treatment approach.

### Volunteer Programs

818 876 1915

Our volunteers who range in age from 13 to 96, support entertainment industry members with meaningful programs, classes, and workshops. Volunteers visit, shop, help as tech tutors, entertain, teach, make calls to reduce social isolation for Daily Call Sheet, and more.

### Veterans Benefits Assistance

323 634 3866

We support industry members and parents of industry members who served in our nation's military to navigate complex VA pension benefits.

## Our Services

MPTF supports working and retired members of the entertainment community with a safety net of health and social services including temporary financial assistance, residential living, and referrals to community resources.



If you are in need and **under 65**, please call our intake line at **323 634 3888**. If you are **over 65** please call **323 634 3866**.







## Therapeutic support with complete and total privacy.

### COMPASSIONATE CARE FOR MENTAL HEALTH NEEDS

The Samuel Goldwyn, Jr. Center for Behavioral Health is housed in a contemporary facility featuring private patient rooms and outdoor recreational space on the sprawling Wasserman Campus in Woodland Hills.

We offer the highest quality, round-the-clock, care for residents in total privacy with a sunroof covered patio near a peaceful rose garden.

### INPATIENT GERIATRIC SERVICES

The Samuel Goldwyn, Jr. Center for Behavioral Health has been designed aesthetically and functionally to meet the unique mental health-care needs of older adults, and is available to the community at large, as well as for the entertainment community. We provide inpatient services and treat such condition as:

- Anxiety
- Bipolar Disorder
- Dementia/Alzheimer's with behavioral disturbances
- Depression
- Schizophrenia
- PTSD
- Psychosis

“You are not your illness. You have an individual story to tell. You have a name, a history, a personality.”

— JULIAN SEIFTER, PROFESSOR  
HARVARD MEDICAL SCHOOL

### DESIGNED FOR INDIVIDUAL NEEDS

The Center utilizes an individualized interdisciplinary approach, inviting patients and families to be integral contributors to each treatment plan. The staff partners with patients and families to rapidly relieve symptoms, optimize functional status, and develop after-care plans to continue the healing process. Recovery is facilitated by a dedicated team including a psychiatrist, internist, nursing staff, social worker, and recreation therapy staff to meet comprehensive individualized goals. Patients receive:

- Medical Consultation
- Daily Psychiatric Evaluation
- Group and Individual Therapy
- Case Management
- Recreational Therapy Services
- Spiritual Counseling
- Physical Therapy/Occupational Therapy
- Dietary Services

## Behavioral Health

Offering comprehensive, compassionate mental health services for adults 55 and older, in a secure and therapeutic environment designed to serve the whole person.

**MPTF** |   
Caring is Infinite

To find out more, call us at **818 876 4140** or contact **Joan Sanchez, BSN, MSN**, Director Behavioral Health, at [Joan.Sanchez@MPTF.com](mailto:Joan.Sanchez@MPTF.com).

**MPTF** |   
MOTION PICTURE & TELEVISION FUND  
Caring is Infinite



Courteney Bailey, MPTF Chief Development Officer, with her daughter, Blake, who attends the Children's Center.



## Child Care

The Samuel Goldwyn Foundation Children's Center provides a learning environment filled with nurturing care, designed specifically for entertainment industry parents.



## CHILD CARE

[MPTF.com/child-care](https://mptf.com/child-care)

# The Samuel Goldwyn Foundation Children's Center is here for you.

### FLEXIBLE CARE FOR BUSY INDUSTRY PARENTS

In a partnership between MPTF and Bright Horizons, the Samuel Goldwyn Foundation Children's Center helps those working in the entertainment industry meet the challenge of demanding work schedules. Early education professionals guide specialized programs for infants, toddlers, preschoolers, and kindergarten-age children. The Center provides a broad spectrum of programs to explore in a structured yet gentle environment. The generosity of the Goldwyn family who enabled its founding has made the Center a key resource for the entertainment industry.

### A LEARNING ENVIRONMENT

Children aged eight weeks through six years are eligible for enrollment in the Center, which is open from 7am to 7pm. The Center embraces the philosophy that children learn through play and hands-on participation in a responsive, nurturing environment that meets the

"I have very few options. There's no option for me to stay at home."

— MICHELLE LEE, STUNTWOMAN



The children are not only our future, they are our present. And for working moms and dads in the industry, this support is essential to our entertainment industry family.

developmental needs of infants and young children.

- All children receive yoga and music classes twice a month
- An active parent group fundraises to provide additional enrichment experiences
- Kindergarten 101 and other parent education classes are offered

### CAREGIVERS WHO CARE

Child-to-teacher ratios follow the guidance of our accrediting body, the National Association for the Education of Young Children, and vary age group to age group. The current staff has been with the Center for up to 20 years, with an average of 10 years—well above the norm.

To find out more, call us toll free at **855 760 MPTF (6783)**, call the Children's Center at **310 445 8993**, or contact **Kae Connors**, Director, at [Kae.Connors@MPTF.com](mailto:Kae.Connors@MPTF.com).



Caring is Infinite





## Help with the unique challenges of aging

MPTF’s Elder Connection program provides comprehensive social services to qualified industry members age 65 and older as well as parents of qualified industry members. MPTF employs masters level social workers who provide case management, supportive counseling, and information and referrals to individuals who live in Southern California and wish to age in place. Additional services may be provided to qualified industry members who live in other parts of the United States.



“I had a lot on my plate professionally as well as worrying about my mother, and MPTF literally changed my mom’s life—multiple times.”

— MARION DOLE,  
DAUGHTER OF AN ELDER CONNECTION CLIENT

about advanced care planning, housing safety, driving and other forms of transportation, getting on the waitlist for MPTF residency, caring for a parent or spouse, and much more. Even if you don’t know where to begin the conversation, you can come to us.

### CAN ELDER CONNECTION HELP YOU?

This service of the MPTF Social Services Department can assist you or your loved one as our social workers provide education, consultation, and referrals to community resources and services for older adults. It is provided by MPTF free-of-charge. We can help with a wide range of areas, from staying healthy and retirement planning to decisions

### DO I QUALIFY FOR ELDER CONNECTION?

To qualify for these services, you are:

- Aged 65+ and interested in exploring long-term planning and other MPTF services with one of our social workers.
- Caring for aging parents and looking for guidance in navigating benefits, medical care, finances, future living arrangements, and other important resources.

## Elder Connection

Are you concerned about aging or taking care of a loved one? Take comfort in knowing that the MPTF Elder Connection program is here to help.



For more information about the Elder Connection program or other MPTF programs for individuals age 65 and older, please contact our intake line at **323 634 3866**.





Cate Adams, NextGen Co-Chair,  
VP, Production, Warner Bros.



## The future is brighter when there's insurance.

### THE BEST SOLUTIONS FOR YOUR NEEDS

Entertainment Health Insurance Solutions (EHIS), a joint program of MPTF and Entertainment Community Fund, offers California residents in the entertainment and performing arts community personalized counseling and enrollment support to ensure that each person understands and purchases the best plan to fit their individual and family needs.

The nature of the entertainment industry is often transient and unpredictable. For gig workers, independent contractors, and anyone in the industry, health insurance is a complicated labyrinth of constantly shifting options. You're in good hands with our deeply knowledgeable team guiding you.

### WE ARE YOUR ADVOCATE

Our programs are always adapting to the shifting landscape of health care options. We are

“When you're young, fit, and full of drive, it's easy to think that 'it will never happen to me.' But this is the myth of invincibility.”

— DBS BANK

singularly focused on keeping members of our entertainment community healthy and capable of pursuing their chosen careers.

Our experienced staff of licensed agents provides unbiased, comprehensive health insurance counseling. EHIS identifies coverage options and helps members of the entertainment and performing arts community enroll in them. Covered California Certified Insurance Agents; CA Insurance License (0M72678)

### A WEALTH OF RESOURCES

- Consultations by phone
- Competitive health insurance options and enrollment assistance in medical, dental, vision, and travel health insurance plans
- Group, individual, family, and senior options
- Alternatives to COBRA
- Enrollment in Medi-Cal, Covered California plans, Child Health Insurance Program, Medicare, and Medicare products
- Educational seminars on insurance options, including Affordable Care Act plans, Medi-Cal, and Medicare
- Community outreach through participation in health fairs, conferences, and local events
- Online educational resources and materials with information and practical tips

## Health Insurance

Getting health insurance or finding quality medical care can be confusing and time consuming for anyone who isn't covered by an employer or union health plan. We're here to help.

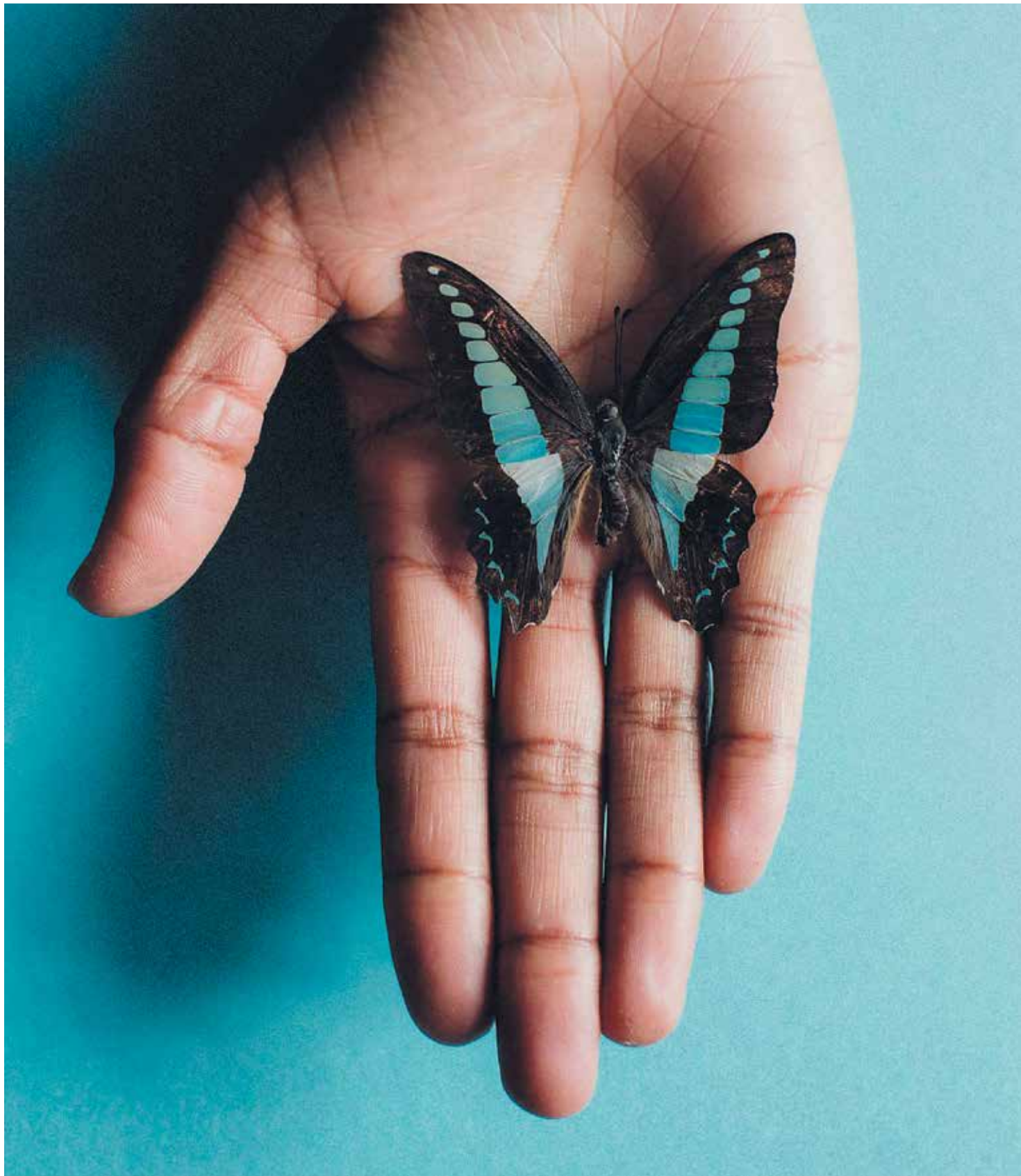
**MPTF** | **ICF**  
Caring is Infinite

For more info, visit [ehisca.com](http://ehisca.com), call **833 777 3447**, or submit a request for assistance at [entertainmentcommunity.submittable.com/submit](http://entertainmentcommunity.submittable.com/submit)

A partnership program with  
**Entertainment Community Fund**  
Supporting a life in the arts

**MPTF** | **ICF**  
MOTION PICTURE & TELEVISION FUND  
Caring is Infinite





## We help people cope with life's greatest challenges.

### WHAT IS PALLIATIVE CARE AND HOW CAN IT HELP?

As opposed to hospice care, which comes at the end of life, palliative care can come into play at any stage of an illness, with a team of specially trained physicians, nurses, social workers, chaplains and other professionals offering care, comfort, and support to patients and their families. The focus is on the whole person, not just the diagnosis. Efforts are toward enhancing quality of life by managing pain and stress as well as helping patients face the risks and burdens of their illness and treatment choices.

### OUR APPROACH

Nationally recognized, MPTF's award-winning Palliative Care program has served thousands of industry members over the years. Over 70% of our patients live in the community, and the rest live on our Wasserman Campus

"It's not just about being able to wake up the next morning. It's also about having a reason to. We're here to focus on that reason."

— LINDA HEALY, VICE PRESIDENT,  
CHIEF INNOVATION OFFICER

in Woodland Hills. Our Palliative Care clients are visited by our team in designated skilled nursing facilities, in their homes on the Wasserman campus, and in collaboration with UCLA, in the outpatient clinic setting. Virtual visits by the MPTF Palliative Care nurse practitioner, Chaplain, and social worker are also available via the phone or video. When needed, we also help industry members find quality palliative care closer to where they live.

### CARING FOR PATIENTS AND FAMILIES

- **Interdisciplinary Team** assists clients to enhance relief and manage social, emotional, spiritual symptoms associated with their medical condition and treatment they are receiving.
- **Assessments** for depression, anxiety and other issues related to diagnoses and for financial need, we facilitate assistance.
- **Supportive Counseling** Assists clients and their families to process changes that a serious diagnosis has brought to their lives.
- **Community Resource Caregiving**, placements, home health, hospice, support groups, therapists, durable medical equipment, legal, transportation, food delivery programs.
- **Caregiver Support Education**, support and referrals to caregivers. Provide bereavement support to family members and friends.

## Palliative Care

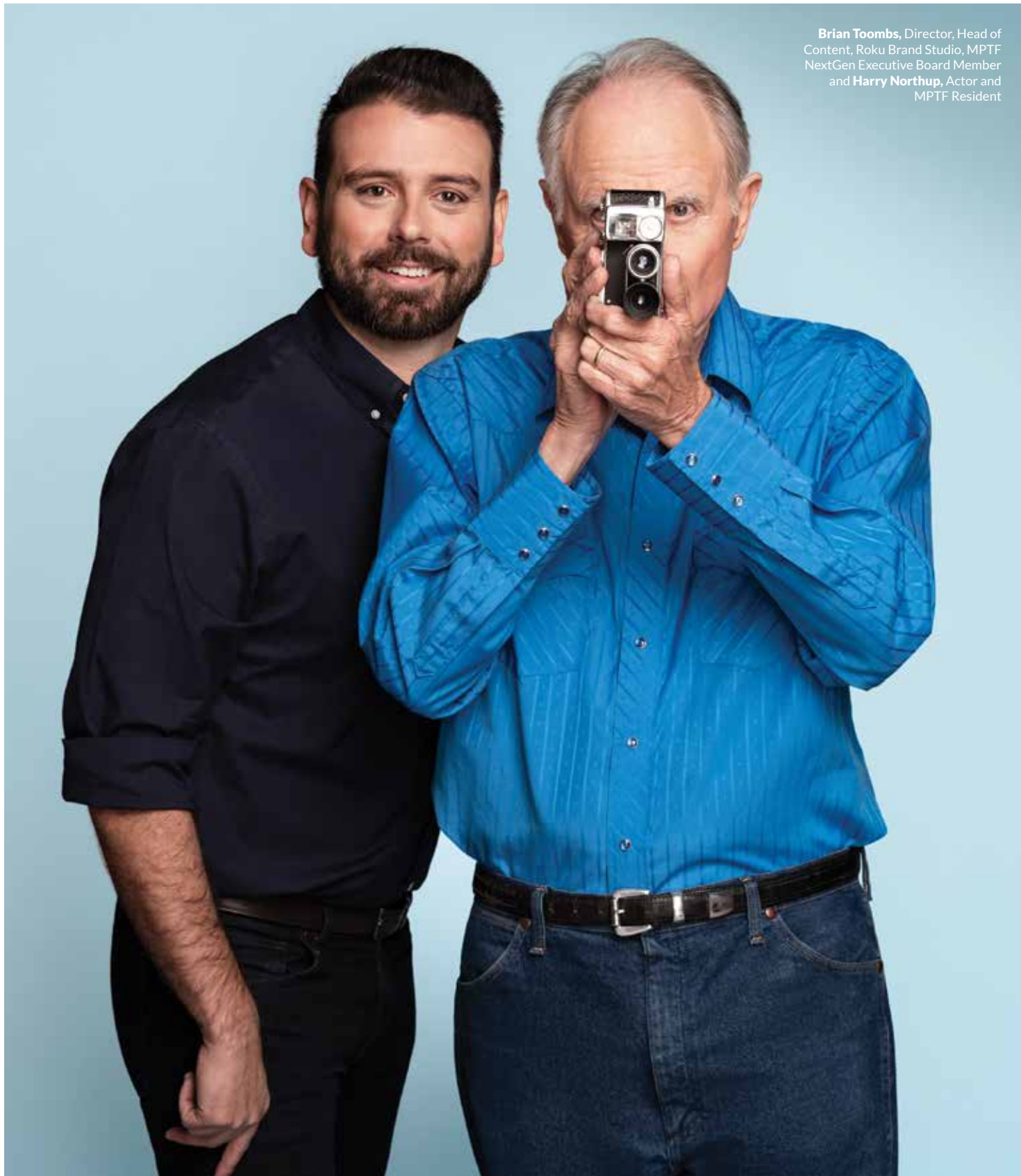
Our nationally recognized, award-winning program for the care and support of persons with serious, chronic, and life-threatening conditions at any stage.

**MPTF** |   
Caring is Infinite

To find out more, call us toll free at **818 876 1739** or contact **Linda Healy**, Vice President, Chief Innovation Officer, at [Linda.Healy@MPTF.com](mailto:Linda.Healy@MPTF.com).

**MPTF** |   
MOTION PICTURE & TELEVISION FUND  
Caring is Infinite





Brian Toombs, Director, Head of Content, Roku Brand Studio, MPTF NextGen Executive Board Member and Harry Northup, Actor and MPTF Resident

## For a community built on connections.

### RECEIVE A CALL, MAKE A CALL

Looking to give back but don't have much time? Interested in connecting with fellow industry members? Or have a loved one who may benefit from additional social connections to brighten their day?

Our social connectivity program, **Daily Call Sheet**, is a fun, flexible, and easy way to give back to the entertainment community and industry you love. Volunteers make calls from anywhere—their home, work, even from their car.

- Talk and build a relationship with someone who shares your interest
- Reminisce with interested industry members
- Increased sense of purpose
- Both volunteer and call recipient benefit (People who volunteer have a 70% decrease in depression)
- Flexible time and place
- Volunteer ages range from 20s-90s
- 600+ industry members have participated

### A GROWING EPIDEMIC

Social relationships have as much impact on physical health as blood pressure, physical activity, and obesity. Those with meaningful social lives tend to live five years longer than

“It’s so nice to have someone to talk to on the phone. A verbal hug is what these calls are to me...”

— FEMALE, RECIPIENT, 95

those who don't have a good social network. But for those going through life changes, such as retirement, or giving up a driver's license, or even caregiving responsibilities, keeping up with social connections can be especially challenging.

Mounting evidence suggests social isolation and loneliness is growing rapidly. Currently it impacts more than 8 million people, or one in three older adults, and is associated with medical issues including depression and earlier onset of dementia, according to AARP.

### IT WORKS

Daily Call Sheet volunteers have made thousands of calls to industry members and provided thousands of hours of social conversations. We've had success with even the hardest to reach clients. Social calls truly can be a lifesaving intervention.

## Social Connectivity

Offer your time to listen, share, and connect with the **Daily Call Sheet**—a solution for those who may be seeking connections and a way to give back to the industry you love.



To find out more, call us toll free at **818 876 1190** or contact **Maureen Feldman**, Director, Social Isolation Impact Project, at **Maureen.Feldman@MPTF.com**.



Dina Kuperstock,  
MPTF Chaplain

## Spiritual support for life.

Rabbi Arthur Rosenberg, our Palliative Care chaplain, and Chaplain Dina Kuperstock provide spiritual guidance for our campus residents day-to-day and in times of need, including 24-hour access to our multi-faith chapel. We also provide spiritual support to industry members off-campus through our Palliative Care program.

Entertainment industry members know all about the importance of a good story, and our spiritual care services are here to help residents and their families continue to weave meaning and connection into the stories of their lives. We also provide spiritual support to industry members off-campus through our Palliative Care program.

### SPIRITUAL CARE SERVICES OFFERED

- Individual and Family Pastoral Counseling
- Religious Services
- Holiday Celebrations
- Local Ministry Partnerships
- Lifecycle Rituals
- John Ford Chapel
- Trips to Houses of Worship and Sacred Sites
- Spiritual Enriching Practices including Meditation, Yoga, Tai Chi, and Urban Zen Integrative Therapy

“We welcome people of all backgrounds and faiths.”

– CHAPLAIN DINA KUPERSTOCK

### SOULFUL FOCUS AND GUIDANCE

Over the years, we have held special farewell processions honoring residents who have made MPTF such a unique place, as well as “Remembering Our Own” gatherings celebrating the lives of those who touched us all. We have also held wedding ceremonies for residents who met and wanted to tie the knot right here on the Wasserman Campus. Residents have also enjoyed outings to sacred spaces from various traditions, allowing opportunities to explore spirituality in new and fulfilling ways.

Our spiritual care team also works in tandem with our Palliative Care services for guidance through major, life-changing illnesses, and we offer Advanced Care Planning to help make the decisions about healthcare options during a medical crisis. Ministry volunteers also help lead religious services and keep residents connected with local faith communities.

## Spiritual Care

We provide soulful focus and guidance with support of all spiritual and religious traditions through extensive resources to fit the preferences and needs of the entire MPTF community.

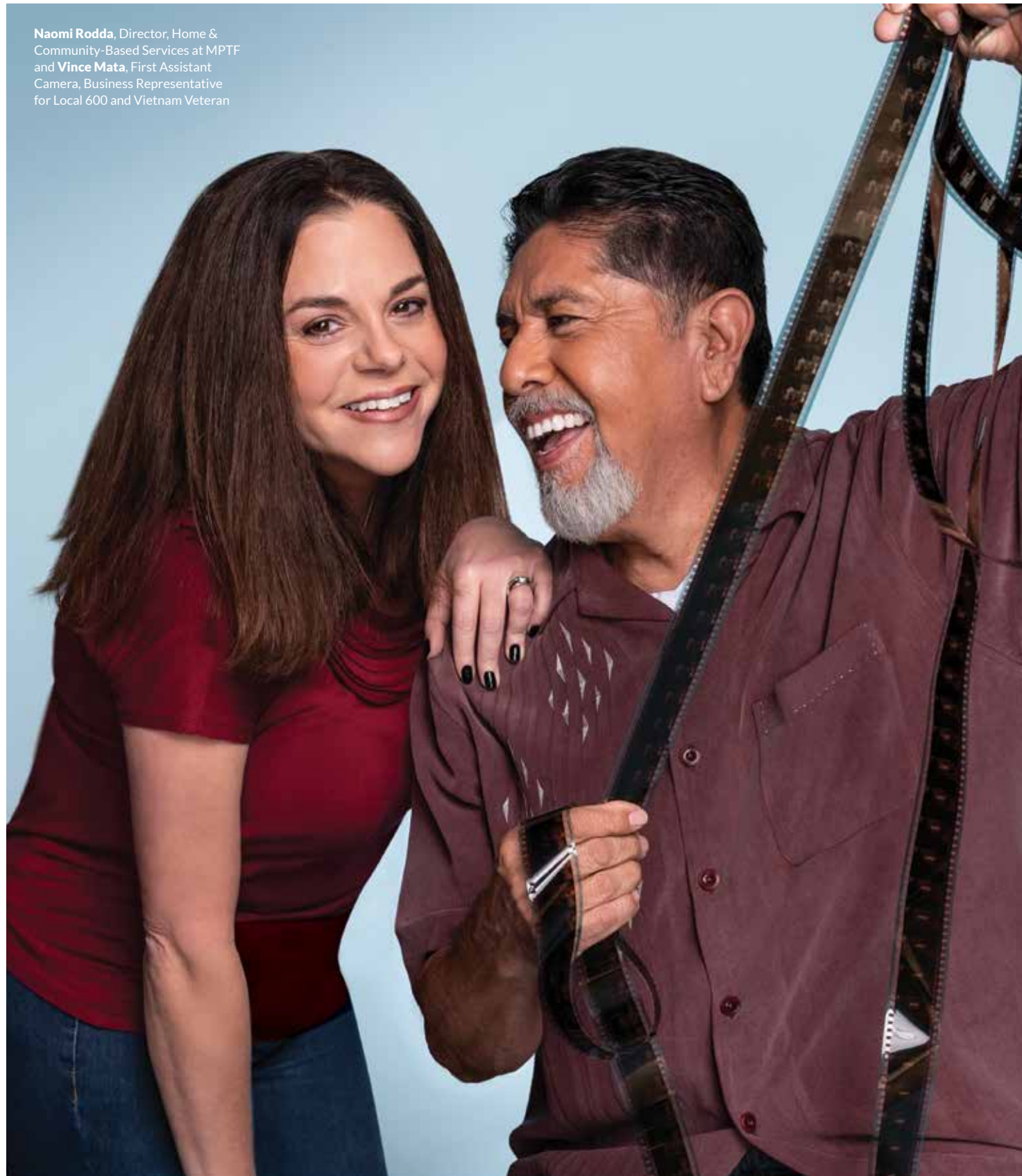


Please visit [MPTF.com/spiritual-care](https://www.mptf.com/spiritual-care) for more information. To reach out to one of our chaplains directly, please email [Arthur.Rosenberg@MPTF.com](mailto:Arthur.Rosenberg@MPTF.com) or [Dina.Kuperstock@MPTF.com](mailto:Dina.Kuperstock@MPTF.com).





Naomi Rodda, Director, Home & Community-Based Services at MPTF and Vince Mata, First Assistant Camera, Business Representative for Local 600 and Vietnam Veteran



## Veterans Assistance

If you're a veteran and member of the entertainment industry, we're here for you—to help understand and secure the rightful pension benefits you are due.



## VETERANS ASSISTANCE

[MPTF.com/veterans-assistance](https://MPTF.com/veterans-assistance)

# Help in accessing the benefits you've earned.

### MPTF CAN HELP

If you are a veteran, the surviving spouse of a veteran, or an industry member with parents who served, we are here to help.

Many veterans and surviving spouses are not aware of their full array of benefits. Many others have attempted to apply on their own, only to experience years of denials from the Veterans Administration. We are here to help.

### WHAT WE DO

MPTF conducts screenings for military veterans and their surviving spouses to determine whether they will qualify for pension benefits now or in the future. In 2021, we screened 872 veterans and surviving spouses, recovering \$291,341 in retroactive benefits and \$24,272 in ongoing benefits. Initial screenings take only 10-15 minutes, and the results can be life changing.

### NO VETERAN SHOULD HAVE TO

“The core of our program is to help screen for benefits that could make our veterans' lives better.”

— NAOMI RODDA, LCSW  
DIRECTOR, HOME & COMMUNITY-BASED SERVICES



Pictured: **Don Alberti**, MPTF Resident and Korean War vet, and **Ronald Gomez**, MPTF Veterans Benefits Specialist and Army Veteran. Veterans assist veterans to help encourage successful outcomes for each claim.

### STRUGGLE FINANCIALLY

Benefit awards can be related to service-related injuries or illnesses, including mental health conditions, or increasing care needs if a qualified veteran or surviving spouse should become physically frail or cognitively impaired. Our Veterans Benefits Assistance Program is dedicated to maximizing outcomes by handling the claims application paperwork and navigating bureaucratic obstacles from start to finish. We help ease the burden on the service member or surviving spouse, who has already sacrificed so much to preserve our freedoms. We thank all veterans for their service to our country.

To find out more, call us toll free at **323 634 3866** or contact **Naomi Rodda**, LCSW, Director, Home & Community-Based Services at [Naomi.Rodda@MPTF.com](mailto:Naomi.Rodda@MPTF.com).





Allegra Leedom, MPTF Video Editor,  
and Hans Beimler, MPTF Resident



MPTF STUDIOS

MPTF.com/mptf-studios

## Creativity is ageless.

### THE SHOW GOES ON

With MPTF residents comprised of all walks of the entertainment industry, the need to work together and keep learning the craft remains strong, in front of and behind the camera. MPTF Studios produces and airs original content, movies, and TV shows to audiences on and off campus with a focus on engaging, entertaining, and educating, with programming featuring celebrity guests, wellness routines, game shows, and much more.

### A DREAM COME TRUE

In 2002, Oscar-nominated screenwriter-director Mel Shavelson believed MPTF residents wanted to keep working on productions in the safety and security of their own home. Now residents, staff, and volunteers work shoulder to shoulder bringing new content to the screen every week through in-person and virtual productions. Honored with the Eisner Prize for Intergenerational

“Everybody keeps learning.  
Everyone is working together  
to make a vision come to life.”

— JENNIFER CLYMER, DIRECTOR  
MPTF STUDIOS

Programs, MPTF Studios adapts and thrives as our residents find creative fulfillment and purpose while collaborating with peers and volunteers of all ages.

### SOMETHING FOR EVERYONE

- **Creative Chaos** Broadcast live every week for over 20+ hours of content, this live show brings together residents and friends of MPTF through virtual technology for a wide variety of programming including interactive resident topics, talk shows, sketch comedy with celebrity guests, guided meditations, screenings, and so much more.
- **Instant Film Festival** Once a year we unite residents and volunteers who conceive, shoot, edit, screen, and compete with their own short films over the course of a single day. And the results are amazing.
- **Original Programming** Content produced by MPTF Studios is made possible in part by generous donations from Dell Technologies, with supporters including the Hollywood Foreign Press Association, Manhattan Beach Studios, and Adobe.

### BE A STAR

You can play a part by donating your time and creativity, or by donating equipment and other much needed resources.

## MPTF Studios

MPTF residents, volunteers, and supporters all play their part creating original content all year round with our in-house production studio that fosters creativity, generosity, and teamwork.

**MPTF** |   
MOTION PICTURE & TELEVISION FUND

To find out more, call us at **818 876 6388** or contact **Jennifer Clymer**, Director, MPTF Studios, at [Jennifer.Clymer@MPTF.com](mailto:Jennifer.Clymer@MPTF.com).

**MPTF** |  
MOTION PICTURE & TELEVISION FUND



Michelle Homerin, Volunteer Liason, Director,  
Casting | ABC Signature, MPTF NextGen  
Executive Board Member



## NextGen

NextGen is a group of future-focused individuals who realize we all play our part supporting our community. We are dedicated to raising awareness and creating impact for MPTF and the entertainment industry that it serves.



## NEXTGEN MEMBERSHIP

[MPTF.com/nextgen](https://mptf.com/nextgen)

# Join NextGen.

### WHO WE ARE

MPTF NextGen is a diverse group of talented individuals representing the many aspects of film and television in Hollywood who come together to make our industry a better place.

As an up and coming part of the industry, we hope you will help us in taking care of each other in times of need. We are a community with the passion to create and the heart to give.

### WHAT WE DO

As a group we: meet for networking mixers with peers in the industry; create ways to engage industry professionals; participate in fundraising activities; learn from fascinating stories of founders in the business; and rally our friends, meet new ones, and lead the future by serving as ambassadors for MPTF.

### ADVOCATE

We recognize the need to share the work that MPTF does year after year. We tell the stories of our industry's engine: the people who have worked above- and below-the-line to entertain the world.

### EDUCATE

We are on the front lines with talent, crew, and all industry professionals to share that

“The past cannot be changed.  
The future is yet in your power.”

– MARY PICKFORD, MPTF FOUNDER

for 100 years, MPTF has taken care of our own, and NextGen is the team that will lay the groundwork for the next 100. Whether through providing housing, insurance, childcare, social services, or other needs, MPTF is there for our community.

### INSPIRE

Through our service we seek to inspire those around us to volunteer, donate, or be an ambassador. Just as the leaders of Hollywood paved the way for us, we seek to bring the next generation of Hollywood to 100% participation.

### JOIN US

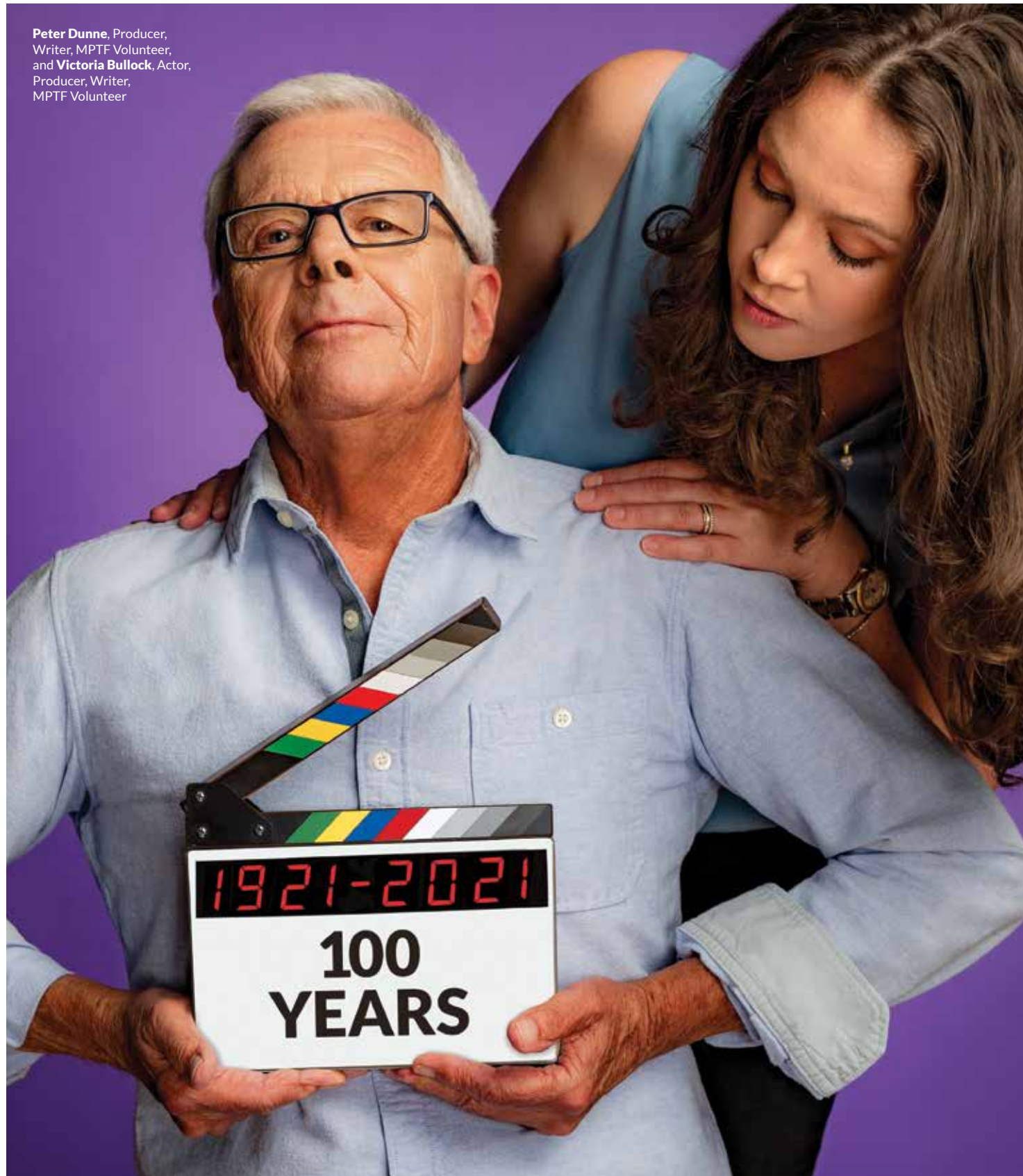
There's no better time to help those in need while making lasting connections in the industry. For a nominal annual fee, enjoy virtual networking mixers and events with such luminaries of industry as Jim Gianopulos, *Paramount Pictures*' Chairman and CEO, and Betsy Beers of *Shondaland* fame. You'll also receive great perks from our corporate sponsors, too.

Please visit [MPTF.com/nextgen](https://mptf.com/nextgen) for more information on the perks of membership and to join our mission, or email [NextGen@mptf.com](mailto:NextGen@mptf.com).





Peter Dunne, Producer,  
Writer, MPTF Volunteer,  
and Victoria Bullock, Actor,  
Producer, Writer,  
MPTF Volunteer



## Volunteering

Bring the joy! For 100 years, MPTF has been the safety net for the entertainment community with volunteers from 14 to 114 providing compassion and assistance.



## VOLUNTEERING

[MPTF.com/volunteering](https://www.mptf.com/volunteering)

# Helping others helps us all.

### GIVING BACK FEELS GREAT

Practicing acts of kindness improves well-being. It's a fact. Make volunteering your moment of Zen.

### IMPROVE A LIFE TODAY

Purpose works both ways. You give, you get. Becoming involved in our nationally recognized volunteer program puts you in great company.

### BE ENGAGED

We make it easy. Whether you're an individual or a group, we will help you find your passion. It's all about the right connection.

### PROGRAM OF DISTINCTION

We're honored to receive a *Generations United* Program of Distinction for our exemplary intergenerational volunteer program.

### A WIDE RANGE OF OPPORTUNITIES FOR A WIDE RANGE OF PEOPLE

MPTF's Volunteer program offers a variety of ways that best suits your area of interest and availability in-person and virtually.

- **Campus Volunteers** are the heart and soul of campus life by enriching the quality of activities and programs.
- **Friendly Visitors** provide conversation and companionship on campus and in the community.

- **MPTF Studios** brings volunteers and residents together to work on original content and productions virtually and at our in-house studio.
- **Fitness and Pool Buddies** give encouragement and assistance with exercise at the Saban Center for Health and Wellness.
- **Junior Volunteers** contribute to daily life on campus. Open to students between the ages of 14 and 18.
- **Shoppers and Grocery Delivery** are two programs that provide help and smiles to industry members.
- **Administrative and Mail Delivery Volunteers** are critical for daily operations.
- **Daily Call Sheet** and **Care Calls** are social and check-in calls that help to reduce social isolation.
- **Angel Cards** brighten birthdays and holidays with handwritten greeting cards.
- **Tech Tutors** help bridge the digital divide by providing assistance with email and devices.
- **Day of Service** invites your company to craft an activity or event to benefit our residents, clients, and your team.

"You may have a fresh start any moment you choose."

— MARY PICKFORD

To volunteer and learn about new and seasonal opportunities, visit [MPTF.com/volunteering](https://www.mptf.com/volunteering). Please join us in taking good care of our own.

